

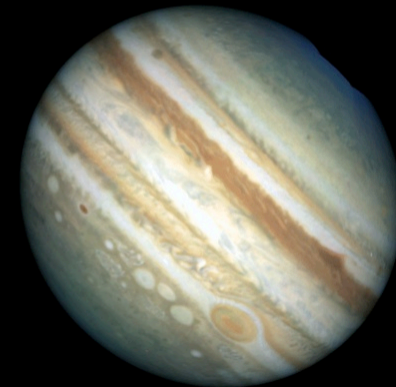
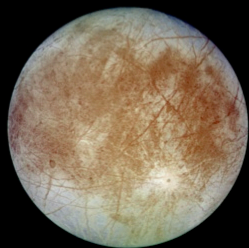
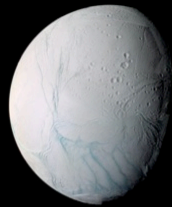
Laboratory Experimental Studies for Astrophysics and  
Planetary Sciences (LEAPS)  
Focus Workshop - October 3, 2010  
DPS 2010 - Pasadena, CA, USA

*Icy Satellites and Exoplanets*

*Sponsored by the AAS's  
Working Group on Laboratory Astrophysics (WGLA)*

*Organizing Committee*

*Murthy Gudipati (JPL)  
Rachel Mastrapa (NASA Ames)  
Reggie Hudson (NASA Goddard)  
Mark Marley (NASA Ames)  
Farid Salama (NASA Ames)*



**Laboratory Experimental Studies for Astrophysics and Planetary Sciences (LEAPS)  
Workshop on “Exoplanets and Icy Satellites” on October 3, 2010 at DPS 2010, Pasadena,  
CA – Sponsored by the WGLA of AAS**

**Program Schedule**

<b>Time (hrs:min)</b>	<b>Session/Speaker/Title</b>
10:00 – 11:00	<b>Registration &amp; Refreshments</b>
	<b>Exoplanets</b>
11:00 – 11:30	Mark Swain (JPL/Caltech) Overview of Exoplanet Research
11:30 – 12:00	Kevin Zahnle (NASA Ames) Exoplanet Research: What do we need from the Lab?
12:00 – 12:30	Oliver Grasset (U Nantes, France) Role of Laboratory Studies in Understanding Icy Satellite and Exoplanet Interiors
12:30 – 13:30	<b>Lunch Break</b>
13:30 – 14:00	Shun-Ichiro Karato (Yale University) Role of laboratory studies on understanding the rheological properties and dynamics of super-Earths
	<b>Icy satellites</b>
14:00 – 14:30	Adam Showman (LPL, Arizona) Status of Icy Satellite Interiors: What is missing from the lab data?
15:30 – 16:00	<b>Refreshments</b>
	<b>Short Talks</b>
16:00 – 16:20	Linda Brown (JPL) Exoplanets and Methane – The Hot Topic
16:20 – 16:40	Athena Coustenis, (Observatoire de Paris, France) Modelling Titan Spectra in the 1.58 $\mu\text{m}$ Methane Window with High-resolution, Low Temperature CRDS $\text{CH}_4$ Spectra
16:40 – 17:00	Stephen Wood (University of Washington) Apparent Topographic Evolution of Icy Satellite Surfaces
17:00 – 17:30	Will Grundy (Lowell Observatory) Icy Surfaces and Their Evolution in Outer Solar System – An Overview
17:30 – 18:00	Raul Baragiola (University of Virginia) Overview of Laboratory Work in Understanding Icy Satellite Surfaces
18:00 – 18:30	Eliot Young (SWRI Boulder) Atmospheres of Icy Satellites – What is new?
18:30 – 19:00	Yuk Yung (Caltech) Laboratory Contribution to Model Icy Satellite Atmospheres